



ASM Series • Current Sensor for 50/60 Hz

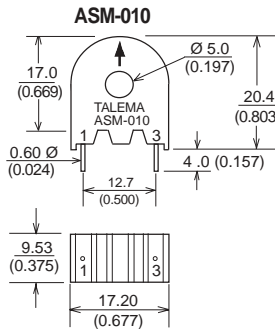
ASM Series current sensors operate as the sealed secondary of a current transformer while the conductor carrying the current to be measured functions as a one turn primary. Measurement accuracy can be improved by increasing the number of primary turns. Applications include detection of branch circuit overload and load drop or shutdown.

Features

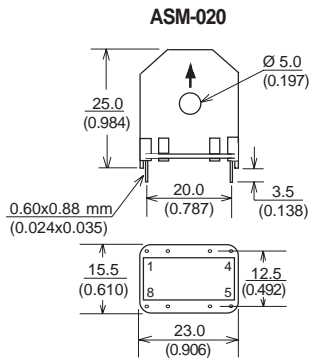
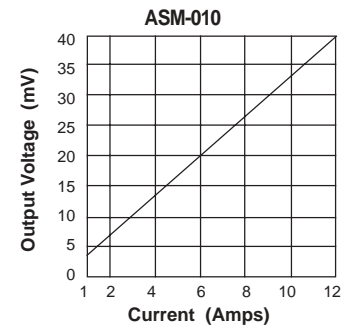
- Fully encapsulated for optimal PC board mtg.
- Mains frequency of 50/60 Hz
- Primary current ratings from 1 to 100 Amps
- Primary to secondary isolated to 2500 VAC
- Operating temperature range: -40° C to +120° C
- Competitive pricing due to high volume production
- Manufactured in ISO-9001 approved facility



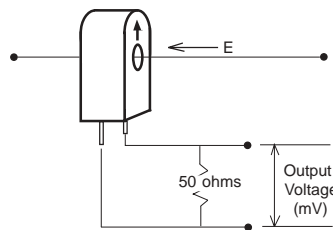
| Part Number | Current Range | Output Voltage Tolerance |
|-------------|---------------|--------------------------|
| ASM-010 | 1 - 10 Amps | ±10% |
| ASM-020 | 1 - 20 Amps | ±10% |
| ASM-030 | 1 - 30 Amps | ±10% |
| ASM-050 | 5 - 50Amps | ±10% |
| ASM-075 | 5 - 75 Amps | ±10% |
| ASM-100 | 5 - 100 Amps | ±10% |



Typical Response

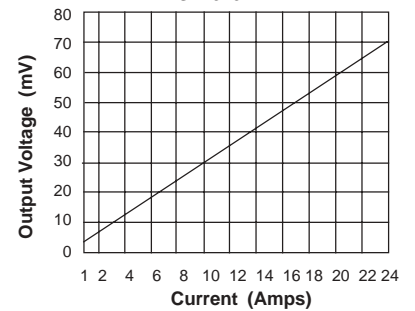


ASM-010 & ASM-020

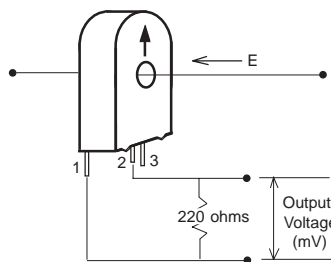
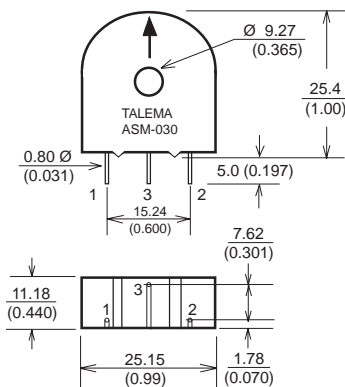


Note: Pins #1 and 8 are Blank

ASM-020

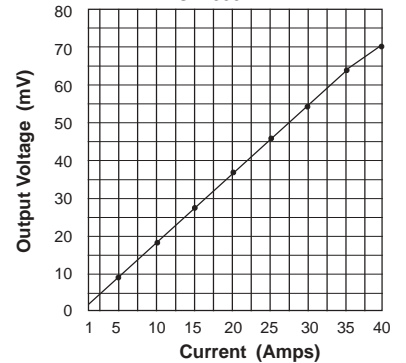


ASM-030

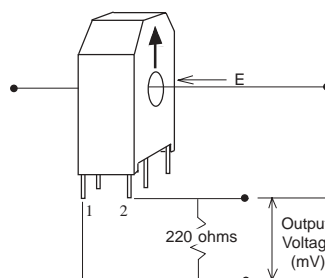
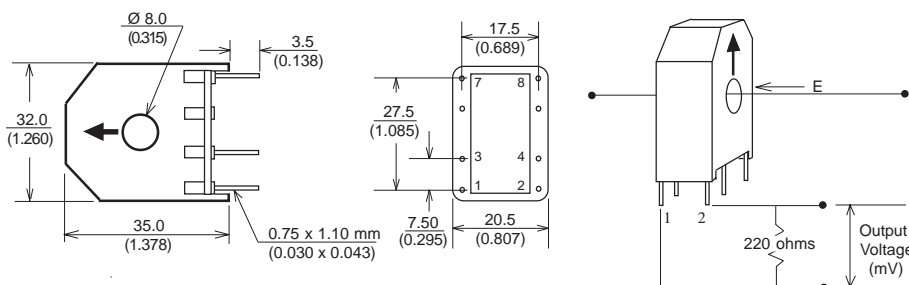


Note: Pin #3 is Blank

ASM-030



ASM-050, ASM-075 & ASM-100



ASM-050, ASM-075 & ASM-100

